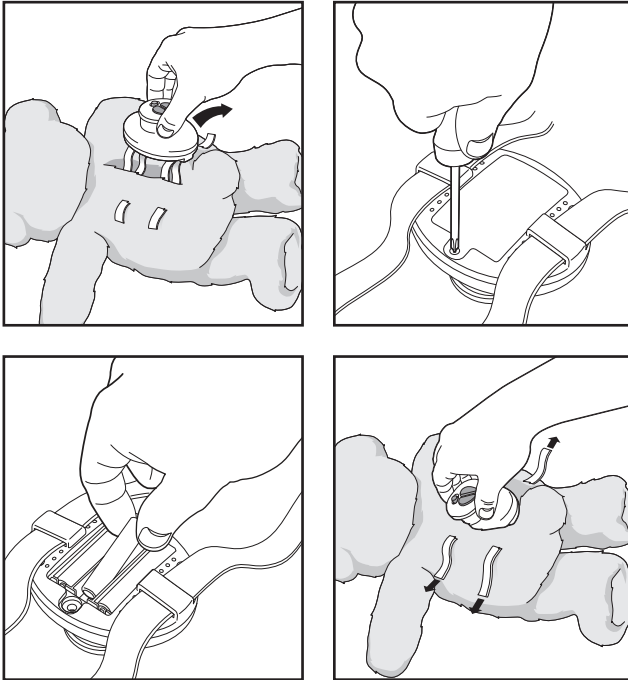


TO CHANGE BATTERIES:

Remove Musical Unit from Bear. Unscrew Battery Door. Remove old batteries and dispose of them safely. Insert new batteries. Screw Battery Door back onto Musical Unit. Insert Musical Unit back into Bear making sure the Hook and Loop Straps are inserted securely through the 4 slots on the back of Bear.



WASH & CARE INSTRUCTIONS:

IMPORTANT: Make sure to remove Musical Unit before washing Bear. Machine wash cold water, gentle cycle. Tumble dry, low heat.



www.summerinfant.com

We at Summer Infant stand behind all of our products. If you are not completely satisfied or have any questions, please contact our Customer Service Department at 1-800-268-6237 (UK customers, please call +44 (0) 208 420 4429) or e-mail us at customerservice@summerinfant.com.

Summer Infant, Inc.
1275 Park East Drive
Woonsocket, RI 02895 USA
1-800-268-6237

Summer Infant Europe, LTD.
Office Suite 6, Second Floor
Bournehall House, Bournehall Road
Bushey, Hertfordshire WD23 3 HP UK
+44 (0) 208 420 4429

©2006 Summer Infant, Inc.
Colors and styles may vary.
MADE IN CHINA.
Please retain information for
future reference. 3/07



For technical support call 1-800-268-6237 (UK, please call +44 (0) 208 420 4429) or e-mail at customerservice@summerinfant.com

For use with children from birth and up.
Keep small parts away from children.

INSTRUCTION MANUAL MOMMIE'S MELODIES BEAR

Thank you for buying the Mommie's Melodies Bear from Summer Infant. By partnering with Gund®, maker of the world's most huggable plush toys since 1898, we've been able to incorporate soothing music and sounds into an adorable, plush bear designed exclusively for Summer Infant by Gund®.

! WARNING:

- Never place Bear in the crib. Always attach to crib rails/posts.
- Check security of Hook and Loop Straps to crib rail frequently.
- Never leave child unattended.
- Never let child play with Musical Unit.
- Remove Bear from crib rail when baby begins to push up on hands and knees.

! BATTERY WARNINGS:

- Do not mix old and new batteries.
- Do not mix alkaline, standard, or rechargeable batteries.
- Remove batteries when bear is stored for long periods of time or when batteries are exhausted.
- Dispose of exhausted batteries properly.
- Non-rechargeable batteries are not to be recharged.
- Rechargeable batteries are to be removed from the toy before being charged.
- Rechargeable batteries are only to be charged under adult supervision.
- Batteries are to be inserted with the correct polarity.
- The supply terminals are not to be short-circuited.

02370

Please read the following instructions and warnings carefully.

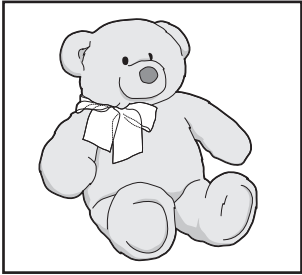
Keep this instruction manual for future reference.

Tools required:

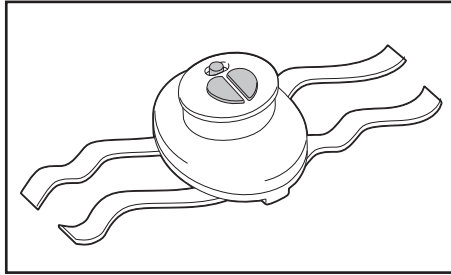
Phillips head screwdriver (not included).

Requires 3 "AAA" batteries (included).

COMPONENTS:



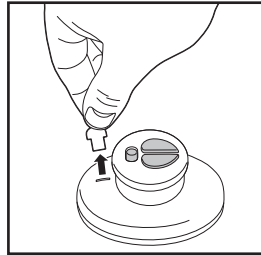
Bear



Musical Unit with 2 Hook and Loop Straps

TO USE:

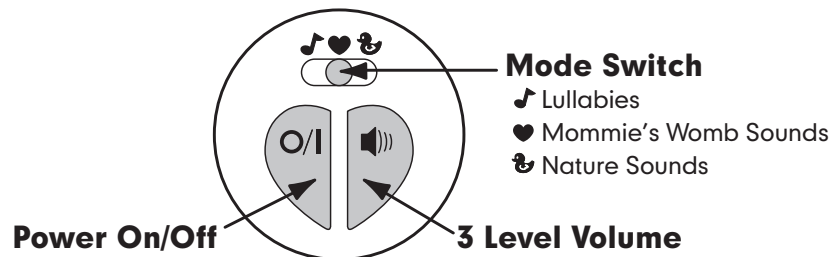
NOTE: Batteries are included for the "Try Me" at store level. You will need to completely pull out the clear plastic "pull tab" to activate the normal play mode.



Select mode you want baby to hear (Lullabies, Mommie's Womb Sounds, Nature Sounds) by switching the Mode Button to either of the three positions. Turn musical unit ON by pressing the Power On/Off button once. Select volume level by pressing 3 Level Volume Button until desired level is reached.

While in the Lullabies Mode or the Nature Sounds Mode, you can use the Power On/Off button to select between 3 different Lullabies and 2 different Nature Sounds. While in either mode, press the Power On/Off twice to switch between choices.

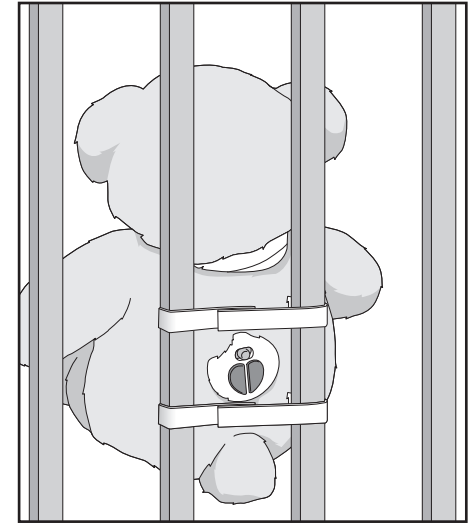
Press the Power On/Off to turn Musical Unit off. **Note:** Musical Unit will shut off automatically after 20 minutes.



TO USE:

Crib Mode (from newborn until child can sit up unassisted)

Attach Bear to crib by wrapping the 2 Hook and Loop Straps on the back of Bear securely to 2 crib posts. Musical Unit should align between the 2 crib posts and face the outside of crib. **Note:** For safety reasons, it is recommended that the Bear be secured to opposite end of crib from baby, out of baby's reach.



Nursery Mode (from when child can push up unassisted to toddler age)

Place Bear somewhere other than the crib, away from reach of child (example: nightstand, changing station, etc.).

Toddler Mode (2 years and up)

Remove Musical Unit and Hook and Loop Straps from Bear. Close the opening on back of the Bear shut and use as a cuddly companion for toddler.

